

Appendix A

Young Creatives: Ensembles and Collectives

	Young Poets	Young Songwriters	Young Visual Arts Group	Young Reviewers	Young Photographers	Young Programmers	Future Band Unique participants	TOTALS/ AVERAGES
No of places	25	6	16	7	13	19	35	121
Male (%)	36%	50%	25%	28%	38.47%	36.84%	42.86%	39.7%
Female (%)	44%	50%	62.5%	72%	61.53%	57.89%	57.14%	53.7%
Other	20%	0%	12.5%	0%	0%	5.27%	0%	6.6%

Young Creatives Cohort (2017/18) (%)

London Average (2011 census):

White 42.15%
 Asian or Asian British 16.53%
 Black or Black British 25.61%
 Mixed 0%
 Other/ unknown / prefer not to say. 15.71%

59.79%
 18.49%
 13.32%
 4.96%
 3.44%

Appendix B

Associate Schools

Sydney Russell School

A secondary school located in the London Borough of Barking and Dagenham. It has 1,908 pupils and 110 teachers. 41.9% of the students are eligible for free school meals (compared to a national average 29.3% and 30.4% have English as second language (compared to a national average 15.7%). Barking and Dagenham is within the lowest 40% nationally for educational deprivation, the lowest 20% for income deprivation affecting children, the lowest 10% for barriers to housing and services deprivation and ranks within the lowest 20% on the National Multiple index of Deprivation.

The Garden Autism Specialist School

A Special Education Needs (SEN) school for pupils aged 4-16 in the London Borough of Hackney. It has 125 students of which 100% have Special Educational Needs, 59.2% have English as a Second Language and 72.8% eligibility for free school meals.

Greenleaf Primary School, Waltham Forest

A primary school located in the London Borough of Waltham Forest, which was recently announced as the Mayor of London's first London Borough of Culture. It has 518 students and 32 teachers. 23.3% of the students are eligible for free school meals (compared to the average of 25.4%) and 54.2% of the students have English as second language (compared to a national average of 20%). Waltham Forest is within the lowest 40% nationally for educational deprivation, lowest 40% for income deprivation affecting children, the lowest 20% for living environment deprivation and ranks within the lowest 20% on the National Multiple index of Deprivation.

Appendix C

Creative Learning Year in Review Publication

In 2016/17

We inspired people to discover and love the arts

13,000 people of all ages and backgrounds participated in our programmes and workshops

42,120 members who enjoy heavily discounted tickets to art, film, music, theatre and dance, as well as exclusive events

68,576 people accessed world-class arts for free by attending our events produced alongside our partners

Spotlight
Walthamstow Garden Party
In July, almost 34,000 people headed to our fourth Walthamstow Garden Party to celebrate the creativity of local communities and enjoy performances from leading international artists. The free festival – presented by the Barbican, Waltham Forest Council and Create – included our Early Paradise tent, featuring a range of brilliant performances from talented young people. The line-up included our Junior Poets, Young Poets and Young Songwriters. In total, 450 children and young people performed across the festival.

Spotlight
Walthamstow Garden Party
In July, almost 34,000 people headed to our fourth Walthamstow Garden Party to celebrate the creativity of local communities and enjoy performances from leading international artists. The free festival – presented by the Barbican, Waltham Forest Council and Create – included our Early Paradise tent, featuring a range of brilliant performances from talented young people. The line-up included our Junior Poets, Young Poets and Young Songwriters. In total, 450 children and young people performed across the festival.

We created an ambitious learning and participation programme for people of all ages and backgrounds

19,000 people on Saturday at Walthamstow Garden Party

4,548 under-fives and their parents/carers enjoyed imaginative child-led play at 95 Barbican Blocks sessions

1,130 contact hours with teachers from Greenleaf Primary School in Waltham Forest; Sydney Russell secondary school in Dagenham and the Garden School in Hackney, for learners with autism

951 students and provided

1,130 contact hours with teachers from Greenleaf Primary School in Waltham Forest; Sydney Russell secondary school in Dagenham and the Garden School in Hackney, for learners with autism

Spotlight
Barbican Box
1126 students from 33 schools took part in Barbican Box, creating original theatre, art or music over six months. This year, we launched our first primary school Box, and – thanks to funding from the Lord Mayor's Appeal – took the programme outside of London for the first time, to four schools and colleges across Manchester where we worked in partnership with HOME, UAL, Awarding Body and leading theatre company Complicité.

We launched our Associate Schools programme and collaborated with

951 students and provided

1,130 contact hours with teachers from Greenleaf Primary School in Waltham Forest; Sydney Russell secondary school in Dagenham and the Garden School in Hackney, for learners with autism

Spotlight
Barbican Box
1126 students from 33 schools took part in Barbican Box, creating original theatre, art or music over six months. This year, we launched our first primary school Box, and – thanks to funding from the Lord Mayor's Appeal – took the programme outside of London for the first time, to four schools and colleges across Manchester where we worked in partnership with HOME, UAL, Awarding Body and leading theatre company Complicité.

barbican Creative Learning Our year in review 2016/17

134 young people were supported through in-depth talent development programmes including Future Band, (Im)Possibilities, Young Photographers, Young Poets, Young Programmers, Young Reviewers, Young Songwriters and Young Visual Arts Group

45 teachers attended our first TeachMeet event in May, which was open to teachers looking to integrate the arts into their classrooms

1,130 contact hours with teachers from Greenleaf Primary School in Waltham Forest; Sydney Russell secondary school in Dagenham and the Garden School in Hackney, for learners with autism

951 students and provided

1,130 contact hours with teachers from Greenleaf Primary School in Waltham Forest; Sydney Russell secondary school in Dagenham and the Garden School in Hackney, for learners with autism

Spotlight
Open Labs
Our Open Labs give artists and companies a week in the Barbican's Pit Theatre to explore, experiment and develop new ideas. In March, the choreographer Rhannon Faith worked with a cast of seven women with experience of domestic abuse to develop *Smack That* (a conversation). The resulting piece shines a light on the complex subject of domestic abuse in an empowering and participatory performance highlighting human resilience. It will now feature as part of the Barbican's 2018 season *The Art of Change*.

And developed the artists and creative industry professionals of today and tomorrow

45 teachers attended our first TeachMeet event in May, which was open to teachers looking to integrate the arts into their classrooms

1,130 contact hours with teachers from Greenleaf Primary School in Waltham Forest; Sydney Russell secondary school in Dagenham and the Garden School in Hackney, for learners with autism

951 students and provided

1,130 contact hours with teachers from Greenleaf Primary School in Waltham Forest; Sydney Russell secondary school in Dagenham and the Garden School in Hackney, for learners with autism

Spotlight
Open Labs
Our Open Labs give artists and companies a week in the Barbican's Pit Theatre to explore, experiment and develop new ideas. In March, the choreographer Rhannon Faith worked with a cast of seven women with experience of domestic abuse to develop *Smack That* (a conversation). The resulting piece shines a light on the complex subject of domestic abuse in an empowering and participatory performance highlighting human resilience. It will now feature as part of the Barbican's 2018 season *The Art of Change*.

Spotlight

19 students are now enrolled in Guildhall School's BA (Hons) in Performance and Creative Enterprise – a pioneering course for artists looking to develop skills for arts industry employment – developed in association with the Barbican

500 young people attended 11 Creative Careers seminars on topics ranging from event production to freelance finances and marketing

Spotlight
Open Labs
Our Open Labs give artists and companies a week in the Barbican's Pit Theatre to explore, experiment and develop new ideas. In March, the choreographer Rhannon Faith worked with a cast of seven women with experience of domestic abuse to develop *Smack That* (a conversation). The resulting piece shines a light on the complex subject of domestic abuse in an empowering and participatory performance highlighting human resilience. It will now feature as part of the Barbican's 2018 season *The Art of Change*.

Basquiat

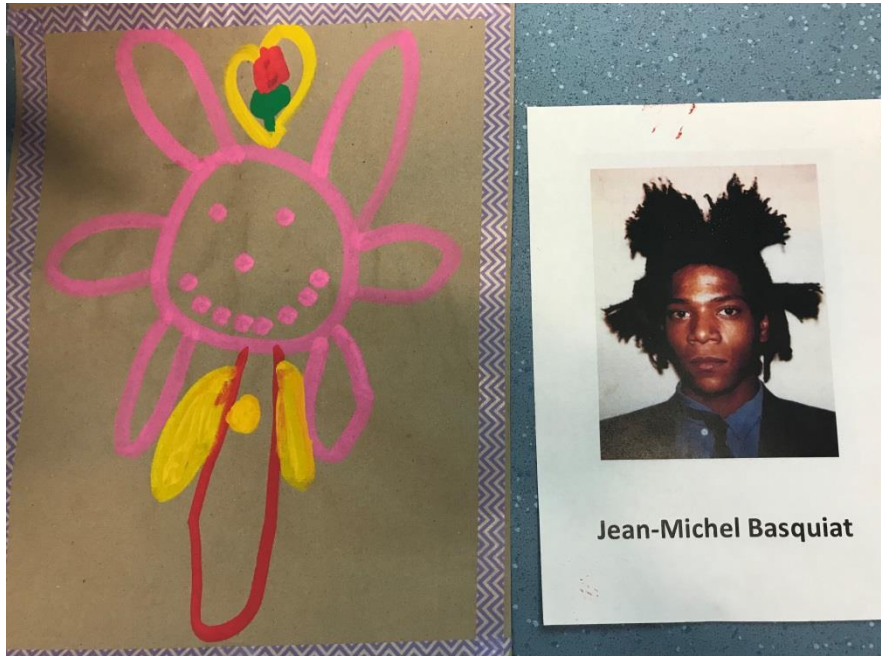
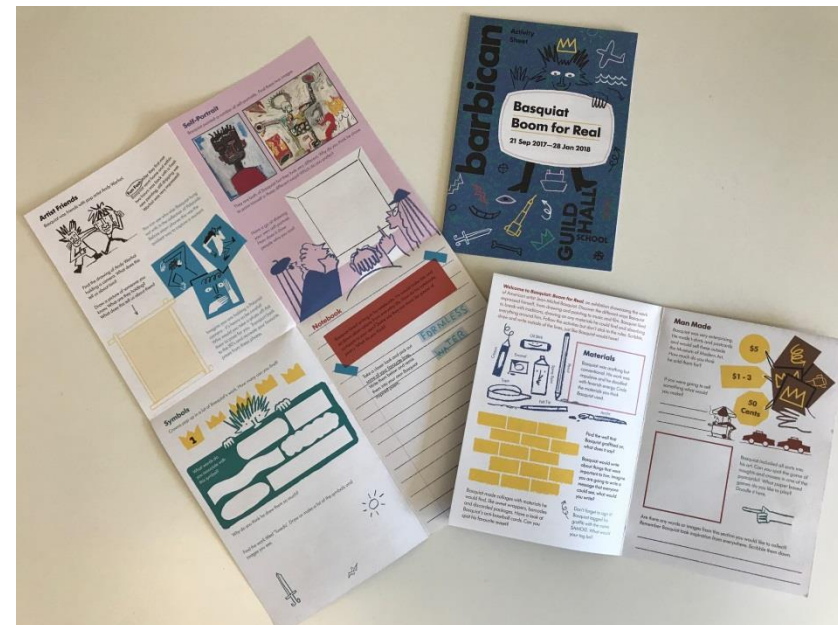


Image of Basquiat inspired painting,
created by a student of The Garden School, Hackney,
as part of their response to Barbican Art Box

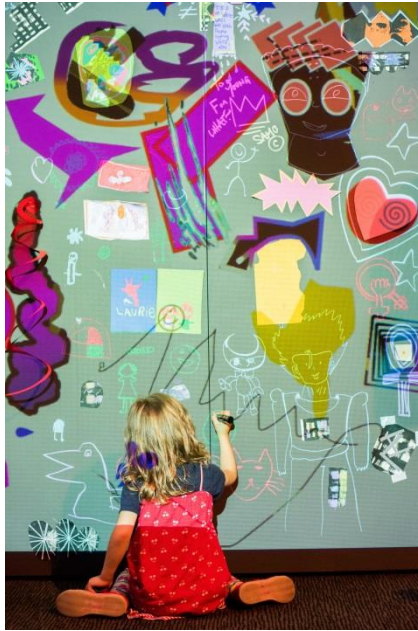
Basquiat Activity Sheet – available to families, young people
and schools visiting the Art Gallery





Basquiat Zine publication





Too Young For What?
Image Credit: Camilla Greenwell



Barbican Boxes



Barbican Primary Box - Michael Rosen

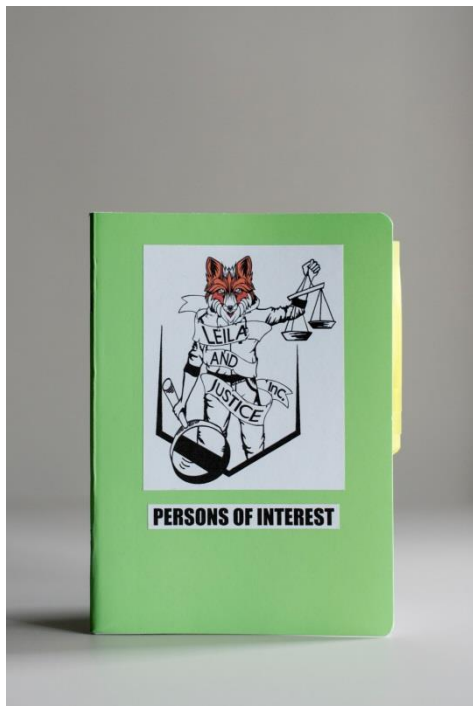
Image Credit: Olivia Hemingway





Barbican Box Music - Max Richter





Barbican Box Theatre – Tamasha

Image Credit: Camilla Greenwell



Barbican Box Art
Basquiat



'The Art of Change'



Change Makers

Image Credit
Zara McFarlane

Sydney Russell



Youth Manifesto publication

Tuning Into Change

Subject to Change

Image Credit: Suzanne Zhang





A Change Is Gonna Come

Image Credit
Camilla Greenwell

